



gürmak®
CONSTRUCTION LTD. ŞTİ.

We serve for a better world.

since 1985

ABOUT US

Get to know us better.

We are proud to contribute to the Istanbul Grand Airport (IGA) new Airport Project, Istanbul subway projects, Osmangazi suspension bridge and Gebze Izmir highway and 1915 Çanakkale Bosphorus suspension bridge projects, which are among the grand&large-scale projects in the history of the Turkish Republic.

Gürmak İnşaat and İstanbul Makine serve with the experience and sectoral engineering approach that it has accumulated since 1985 in Turkey's large-scale infrastructure, investment and construction projects that have reached high volumes in this century.



Istanbul Grand Airport (IGA)

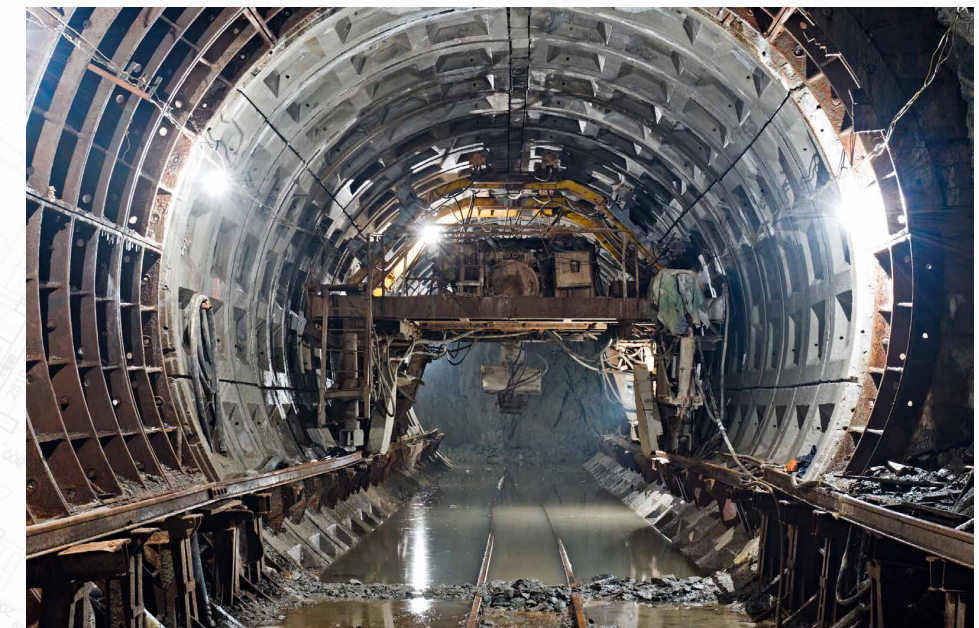
A large concrete bridge segment is being lifted by a crane. The segment is rectangular with a hollow center and a rough, weathered top surface. It is suspended by cables from a crane arm. In the background, there is a construction site with a dirt road, some workers, and a hillside under a cloudy sky. The text "RAPID WELL EQUIPPED POWERFULL" is overlaid on the right side of the image.

RAPID WELL EQUIPPED POWERFULL

The know-how that the company has started to accumulate since the years it was founded keeps Gürmak dynamic in its vision to shape the future of the sector with the strength it draws from its past, and to continue to contribute to the development of the journey of coming to a professional perspective in the industry by putting the engineering understanding at the forefront of all the works it enters.

OUR QUALITY POLICY

Gürmak puts and maintains the principle of leading the developments in the international construction and demolition arena to be used simultaneously in our country with the partnerships it has established at the center of its growth, and to reach all its targets without compromising on protecting human and environmental health with occupational safety measures.



Our vision

The know-how, which the company has started to gaining since the years of its establishment, keeps Gürmak in its vision to shape the future of the sector with the strength it draws from its past, to continue contributing to the development of the journey of coming to a professional point of view in the sector by putting the engineering understanding at the forefront of all the works it enters.

SERVICES

- Industrial Demolition - Dismantling - Decomposition - Excavation
- Infrastructure and Industrial Design & Construction



INDUSTRIAL DEMOLITION - DISMANTLING DECOMPOSITION - EXCAVATION

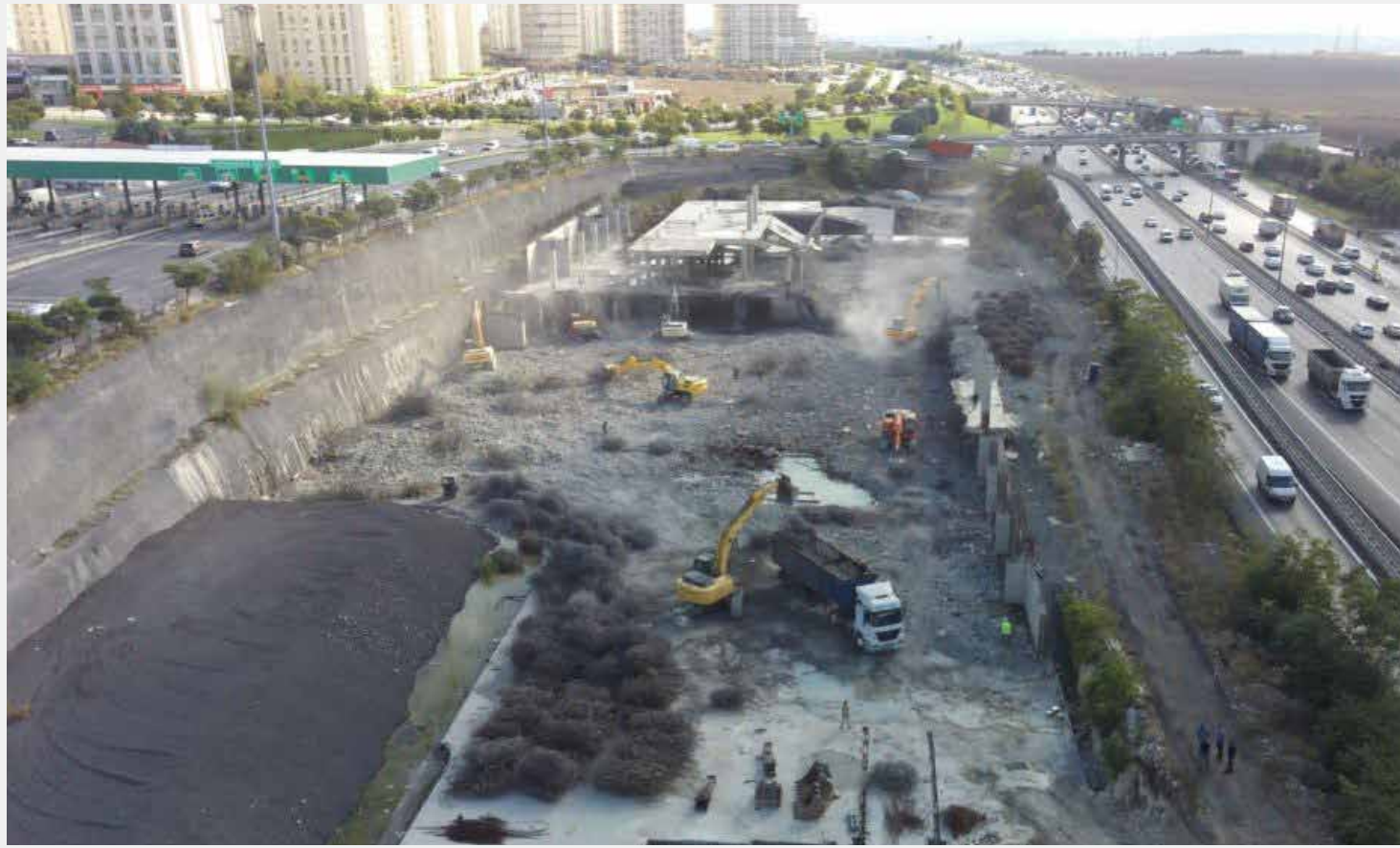
- Demolition Method with Long Reach Machine
- Demolition Method with Controlled Explosives
- Demolition Method with Concrete Drilling and Cutting



The building demolition process is planned depending on many different factors, such as the current state of the relevant structure, the purpose and size of the demolition and dismantling operations. For this purpose, various options regarding the construction and demolition process are evaluated. These options are;

Removing the building completely and cleaning the relevant area,
Demolition, debris removal and site reclamation and excavation operations for new construction processes,
Partial demolition and repair of the building,

Further decision upon above options can be classified as;



DEMOLITION METHOD WITH LONG REACH MACHINE

It is the demolition method that we apply with hydraulic system crawler excavators that are specially produced for demolition works, provide a minimum reach of 18 meters, have cutter - crushing jaws or hydraulic breaker.

Istanbul Ministry of Highway Project / 25.000 m² project area



- Project Detail
Adana Başer Chemical Industry Demolition

- Construction Area
9.500 m²



INDUSTRIAL DEMOLITION

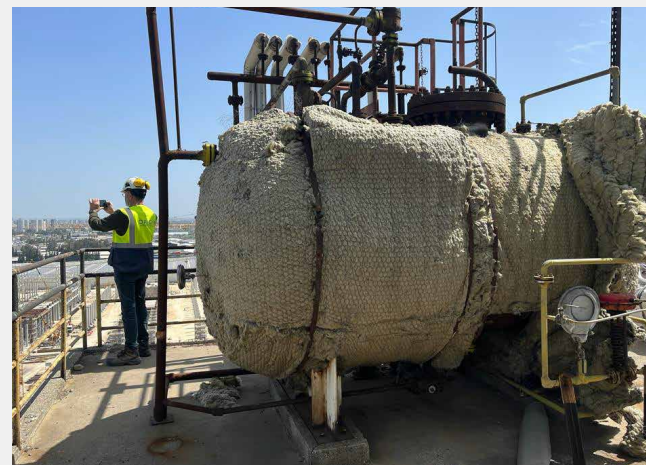


- Project Detail

Adana Sasa Polymer Factory
Demolition Project

- Construction Area

45.000 m²



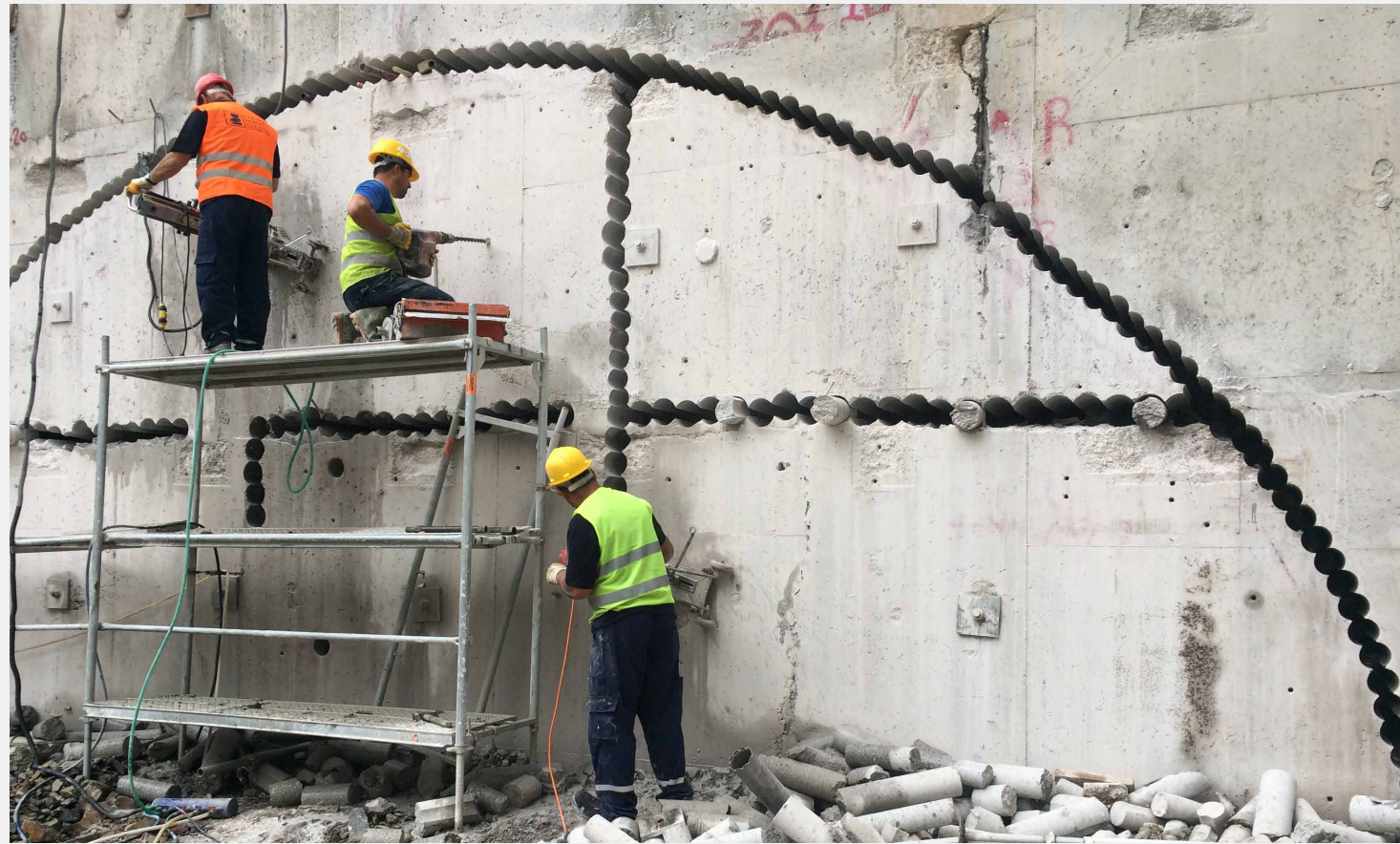


DEMOLITION METHOD WITH CONTROLLED EXPLOSIVES

This demolition technique is based on the demolition of the structural system of a building. It has become widespread practice in “urban transformation” projects that have been trending in recent years.

With explosives placed at the point determined by the necessary analyzes, it is aimed to create a collapse effect in the center of gravity of the structure, and to collapse in place or inappropriate directions with its own vertical loads, turning it into a pile of rubble in size that can be loaded in site.

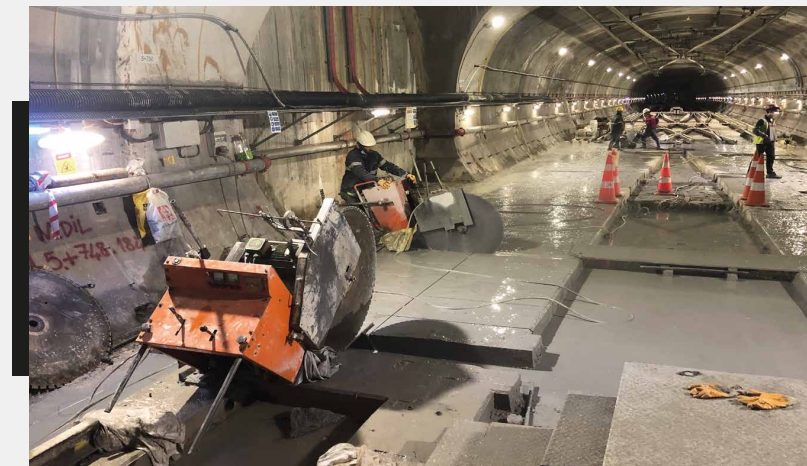




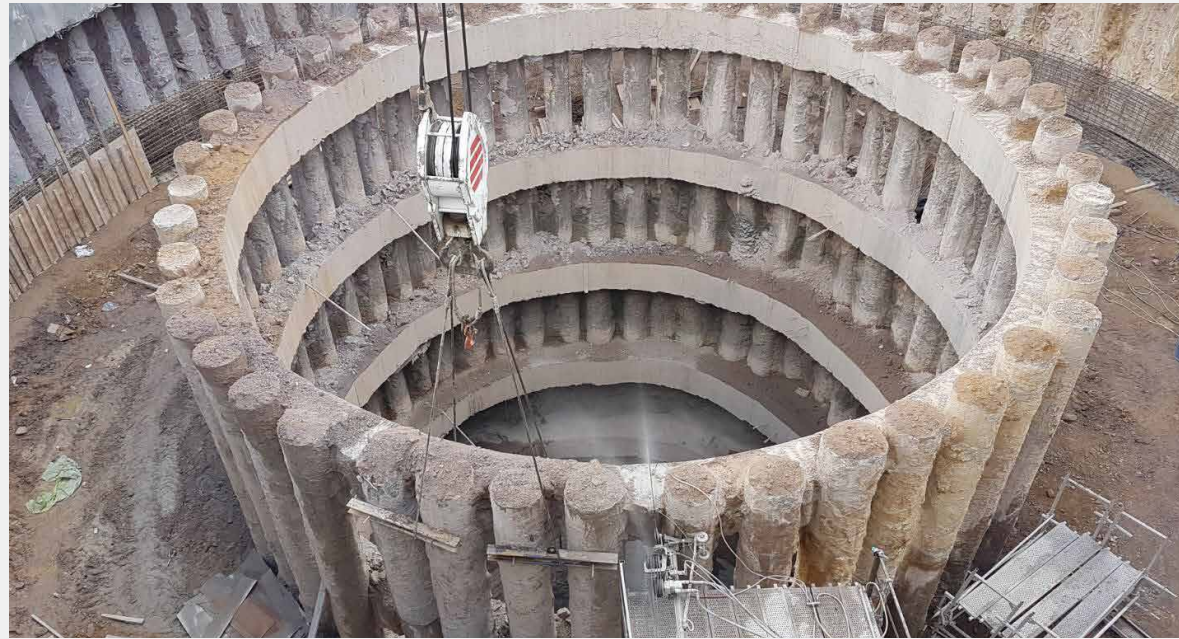
DEMOLITION METHOD WITH CONCRETE DRILLING AND CUTTING

It is a demolition method based on the elimination of reinforced concrete elements by using diamond cutters, hydraulic wall saw machines and core drilling machines.

No demolition method can be as effective as cutting and drilling concrete with diamond tools in the work to be done for service changes in buildings, whether several holes have been drilled or the entire flooring has been removed all at once.

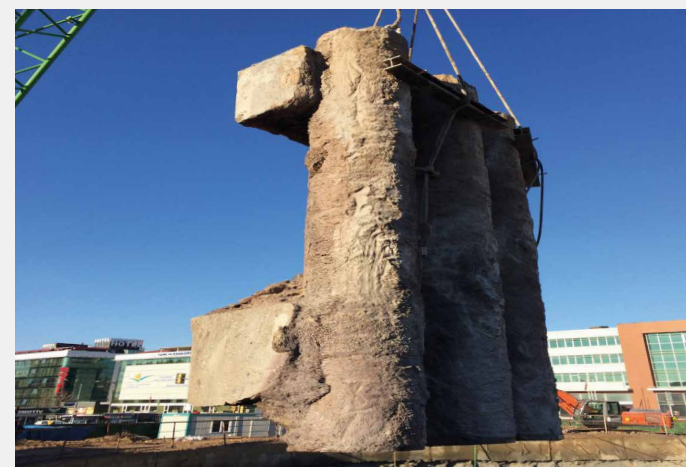


WIRE SAWING



• Project Detail

Bostancı-Dudullu Metro Project

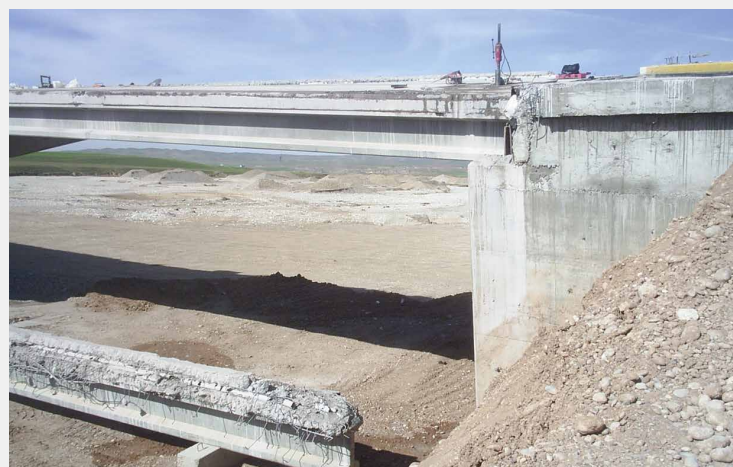


• Project Detail

Kadıköy-Kartal Metro and Mardin Dam Projects



BRIDGE AND VIADUCT CUTTING



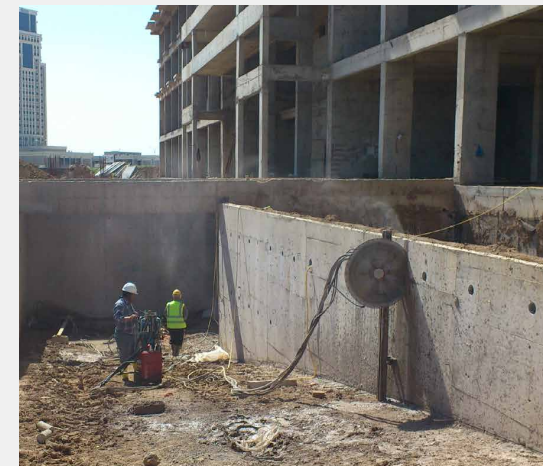
BRIDGE AND VIADUCT REINFORCEMENT



WALL SAWING



Cutting the stepladder, slab and curtain wall up to the 70 cm depth with / without angle by the machine of hydraulic, remote-controlled, movable on the rail.



FLOOR SAWING



- Project Detail

Cutting the slab concrete up to the 50cm depth by full automatic machines which can move on the rail.

Cutting factory moulding concrete, fuel stationary, airport, slab concrete, dilatation and floor sawing Istanbul Metro Stationary Floor Sawing Works.

- Project Detail

Gebze-Izmir Highway Facility Project

- Construction Area

2.800 m²



- Project Detail

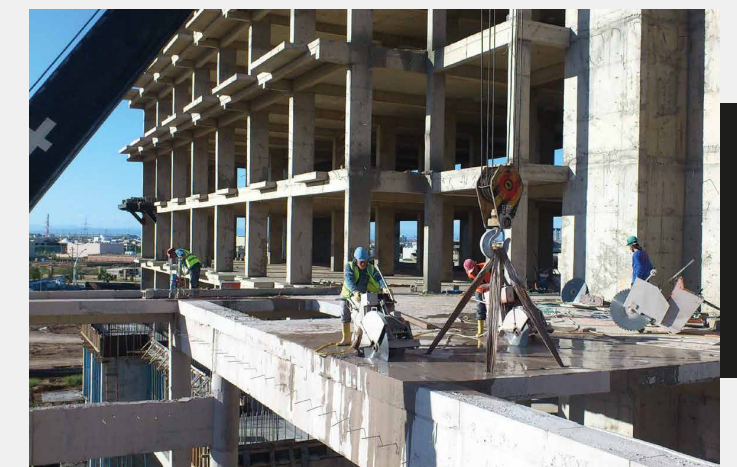
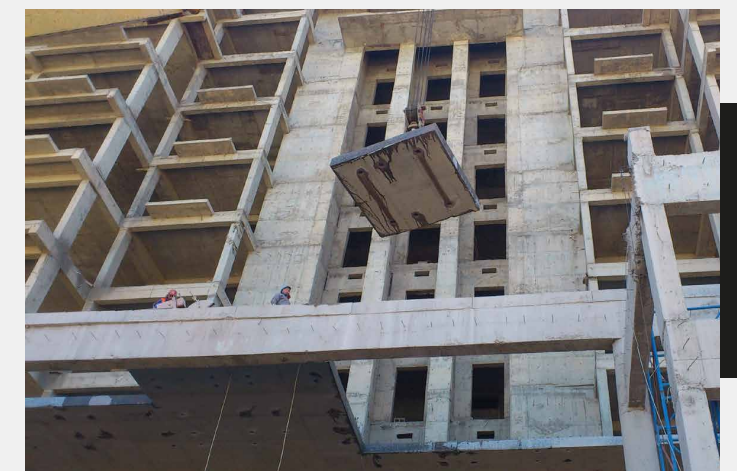
North Iraq Hotel Project

- Employer

Mariot Hotels

- Construction Area

6.200 m²



INFRASTRUCTURE - INDUSTRIAL DESIGN & CONSTRUCTION



One of the key features of Gurmak construction, where competition is intense. It has the necessary infrastructure and partnership structure for EPC contracts, including design in all kinds of industrial projects.

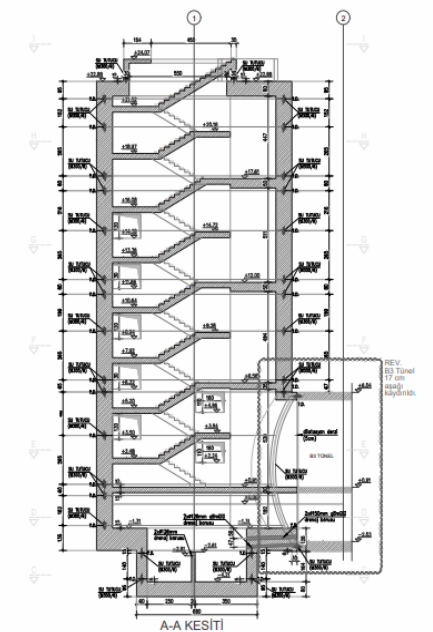
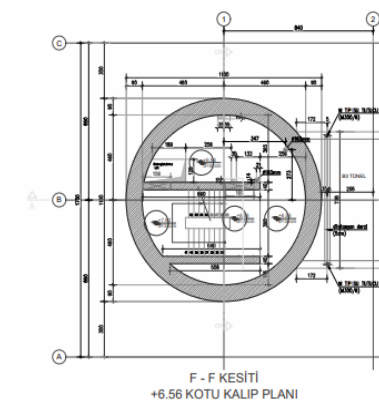
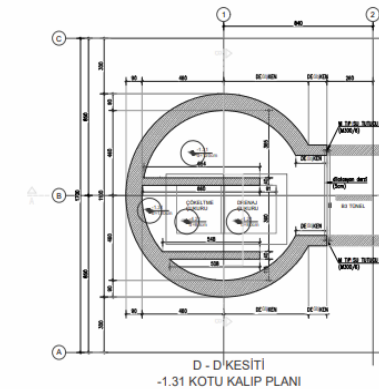
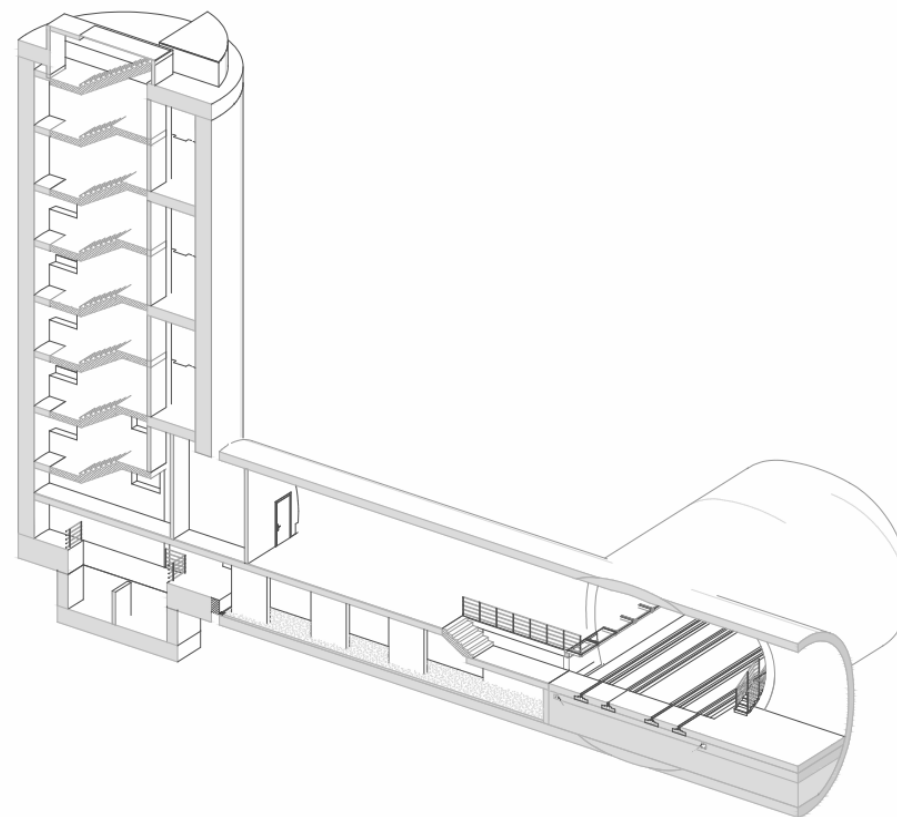


Istanbul Dudullu-Bostancı Subway Line Shaft Project & Cross Passages

INFRASTRUCTURE - INDUSTRIAL DESIGN & CONSTRUCTION

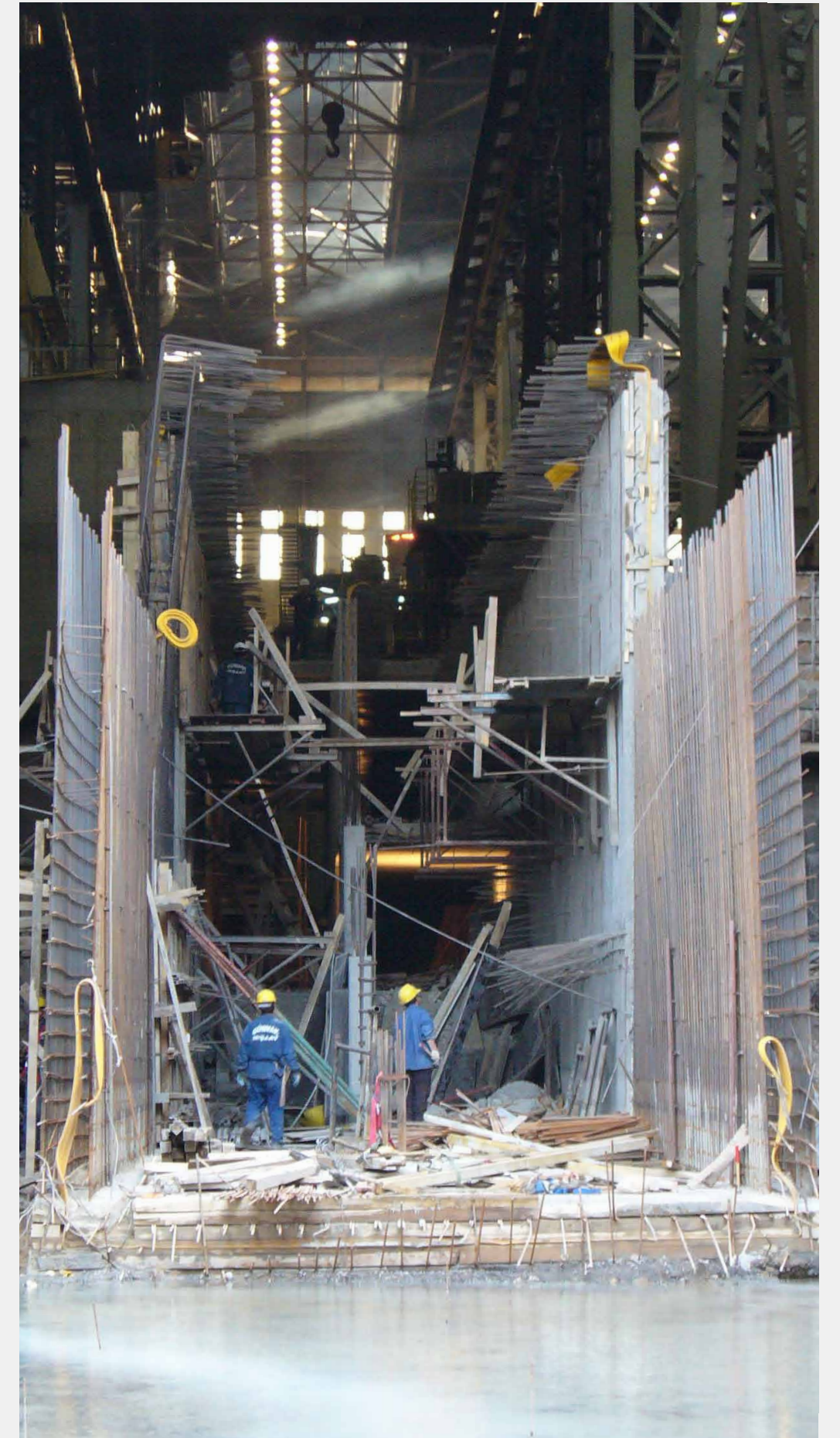
Gürmak started the rough works of the in 2003 at Ataturk airport-yeni Bosna Metro Line, which is Turkey's first metro line still continuing with the Bostanci-Dudullu and the metro and railway works.

The company also carried out the works of economically designing and executing the appropriate methods in construction works, demolition and in construction works, in projects such as Heavy Industry factory buildings, highway, railway, subway, bridge, tunnel, dock, sewage treatment.





Çanakkale Power Plant Construction
Formwork and Concrete/Wire Sawing Works



İsdemir Steel Industry Infrastructure Project
Construction Area: 17.000 m²

CONSTRUCTION AND DESIGN



İGA Construction / 2017

• Employer
İskenderun Demir Çelik Fabrikası
/2005

• Construction Area
5.000 m²



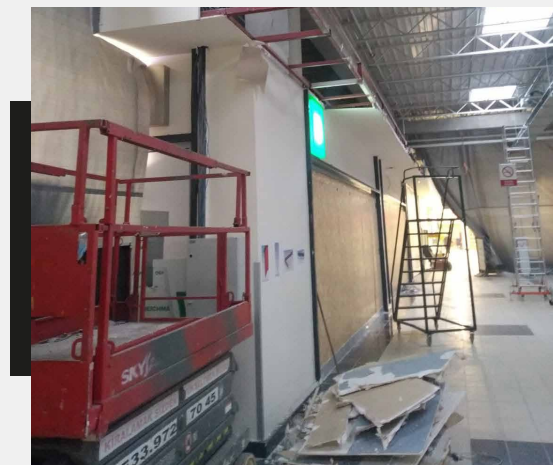
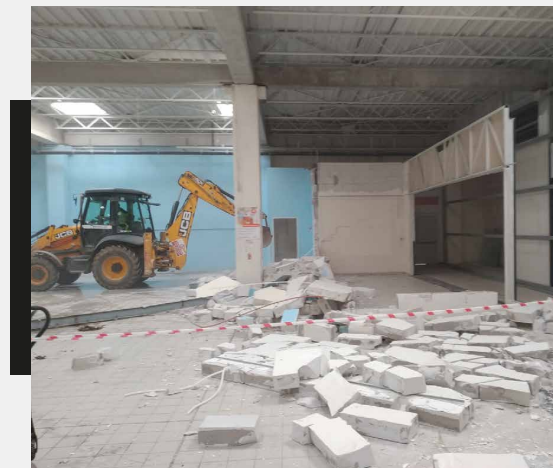
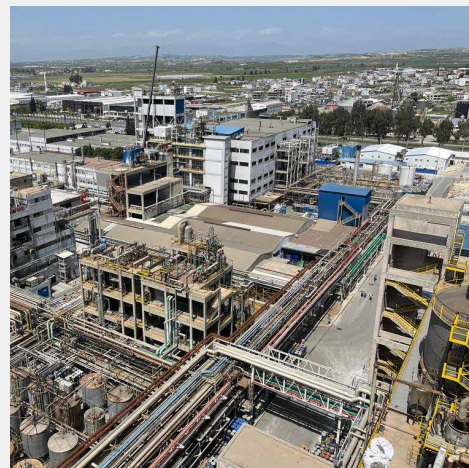
• Employer
Diyarbakir Renault Building / 2008



DISASSEMBLY AND DECOMPOSITION



• Employer
İzmir Highway



• Project Detail
İstanbul Çerkezköy Shopping Mall Project

• Employer
Migros

• Construction Area
18.000 m²